

New Brighton Directional Waverider Buoy

Location			
OS	331389 E 394507 N		
WGS84	Latitude: 53° 26.57' N Longitude: 03° 02.06' W		
Instrument type			
Datawell Directional Waverider Mk III			
Water depth	~5m CD	Buoy in situ off New Brighton. Photo courtesy of Fugro GB Marine Limited	Location of buoy (Google mapping, image ©2016 TerraMetrics)

Data Quality

Recovery rate (%)	Sample interval
28	30 minutes

Monthly Averages - 2014

All times are GMT

Month	H _s (m)	T _p (s)	T _z (s)	Dir. (°)	SST (°C)	Bimodal seas (%)	No. of days
January	-	-	-	-	-	-	-
February	-	-	-	-	-	-	-
March	-	-	-	-	-	-	-
April	-	-	-	-	-	-	-
May	-	-	-	-	-	-	-
June	-	-	-	-	-	-	-
July	-	-	-	-	-	-	-
August	0.32	3.9	3.2	179	16.8	-	20
September	0.17	3.7	3.1	167	16.5	0	30
October	0.30	4.2	3.3	180	14.8	-	10
November	0.16	3.7	3.1	158	9.5	-	14
December	0.39	4.4	3.5	184	7.3	0	31

Monthly Averages - All Years (August 2014 – April 2016)

Month	H _s (m)	T _p (s)	T _z (s)	Dir. (°)	SST (°C)	Bimodal seas (%)
January	0.34	4.2	3.4	175	6.3	0
February	0.27	4.0	3.2	183	5.4	0
March	0.24	3.9	3.2	175	6.4	0
April	0.20	3.7	3.1	176	9.3	0
May	0.28	3.7	3.1	197	11.6	0
June	0.23	3.6	3.0	196	15.0	0
July	0.25	3.7	3.1	190	17.0	0
August	0.24	3.7	3.1	185	16.9	0
September	0.20	3.8	3.1	176	15.8	0
October	0.21	3.9	3.2	178	13.4	0
November	0.31	4.0	3.3	182	10.2	0
December	0.34	4.2	3.4	188	8.1	0

Storm Analysis

Date/Time	H _s (m)	T _p (s)	T _z (s)	Dir. (°)	Water level elevation* (OD)	Tidal stage (hours re. HW)	Tidal range (m)	Tidal surge* (m)	Max. surge* (m)
24-Dec-2014 12:30:00	1.93	7.1	4.7	7	4.87	HW	8.80	-	-
10-Aug-2014 22:30:00	1.75	6.7	4.5	13	5.40	HW	8.65	0.56	0.74
09-Oct-2014 15:30:00	1.72	6.3	4.6	270	-1.14	HW +4	9.24	0.27	0.40
10-Dec-2014 02:00:00	1.69	7.7	5.6	347	3.37	HW +1	6.90	-	-
08-Dec-2014 12:30:00	1.65	7.1	4.9	359	4.27	HW	7.80	-	-

* Tidal information is obtained from the National Network gauge at Liverpool and/or estimated from the predicted tide levels (Admiralty Total Tide). The surge shown is the residual at the time of the highest H_s. The maximum tidal surge is the largest surge during the storm event.

Annual Statistics

Year	Annual H _s exceedance** (m)						Annual Maximum H _s	
	0.05%	0.5%	1%	2%	5%	10%	Date	A _{max} (m)
2014	1.75	1.51	1.35	1.14	0.85	0.62	24-Dec-2014 12:30:00	1.93
2015	1.63	1.26	1.12	0.97	0.75	0.57	29-Nov-2015 14:30:00	1.97
2016	1.56	1.28	1.19	1.03	0.79	0.54	06-Apr-2016 21:30:00	1.57

** i.e. 5 % of the H_s values measured in 2014 exceeded 0.85 m

Distribution plots

The distribution of wave parameters are shown in the accompanying graphs/tables of:

- Annual time series of H_s (red line is 1.61m storm threshold)
- Incidence of storm waves for 2014. Storm events are defined using the Peaks-over-Threshold method. The highest H_s of each storm event is shown
- Wave height exceedance each year since deployment
- Percentage of occurrence of H_s, T_p, T_z and Direction for 2014
- Joint distribution of all parameters for all measured data, given as percentage of occurrence
- Wave rose (percentage of occurrence of direction vs. H_s) for all measured data

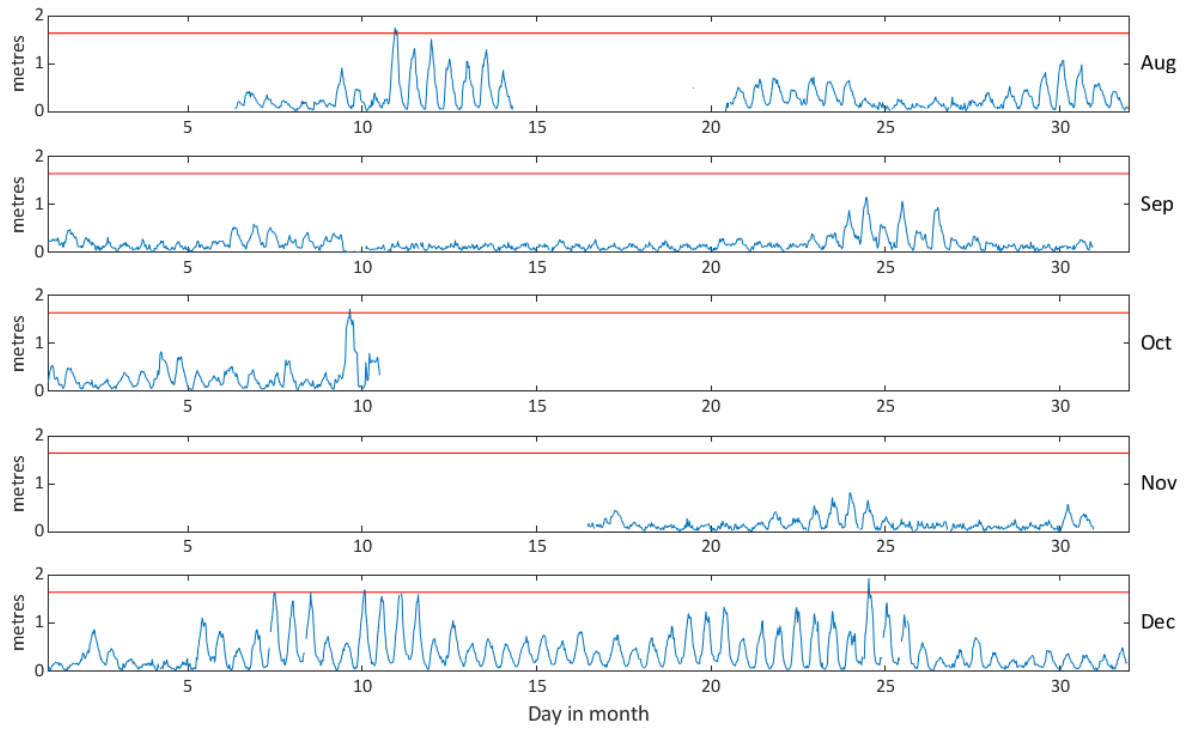
General

The wave buoy at New Brighton, owned by Sefton Council, was deployed on 06 August 2014, at which time the magnetic declination at the site was 2.31° west, changing by 0.18° east per year. There is a notable tidal signature to significant wave heights at this location, given the water depth of the buoy (~5m CD) and the spring tidal range (~8.4m). The buoy was decommissioned on 21 April 2016.

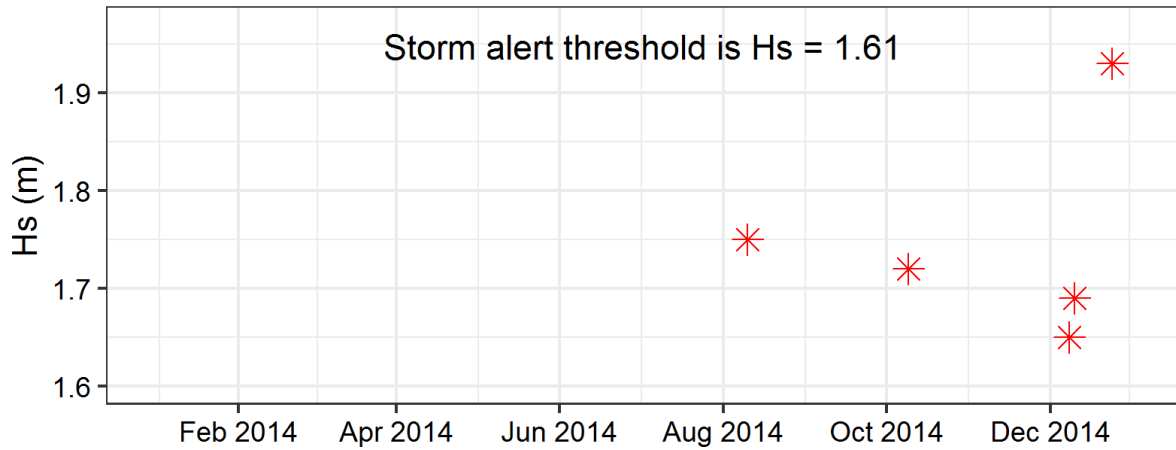
Acknowledgements

Tidal data were supplied by the British Oceanographic Data Centre as part of the function of the National Tidal and Sea Level Facility, hosted by the Proudman Oceanographic Laboratory and funded by DEFRA and the Natural Environment Research Council.

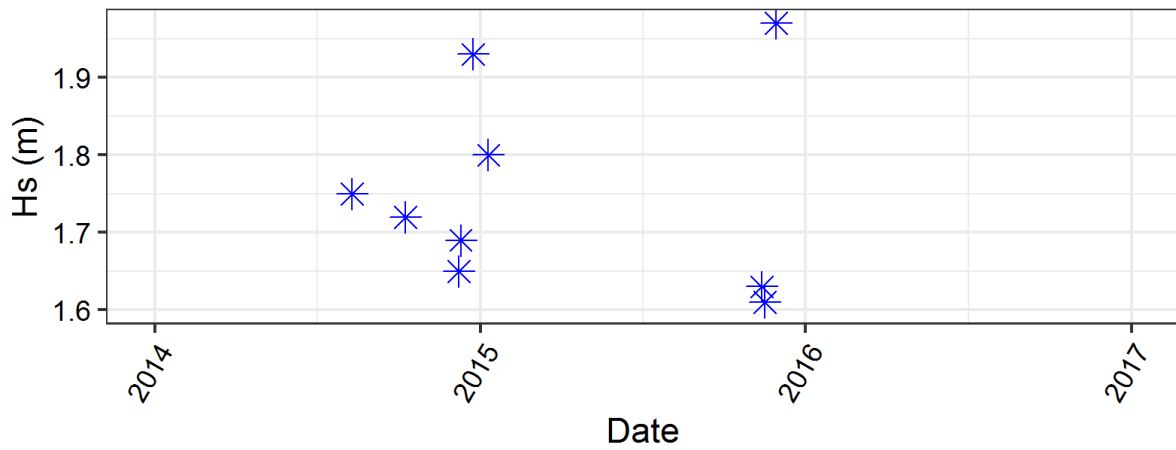
New Brighton - Significant Wave Height (Hs) during 2014



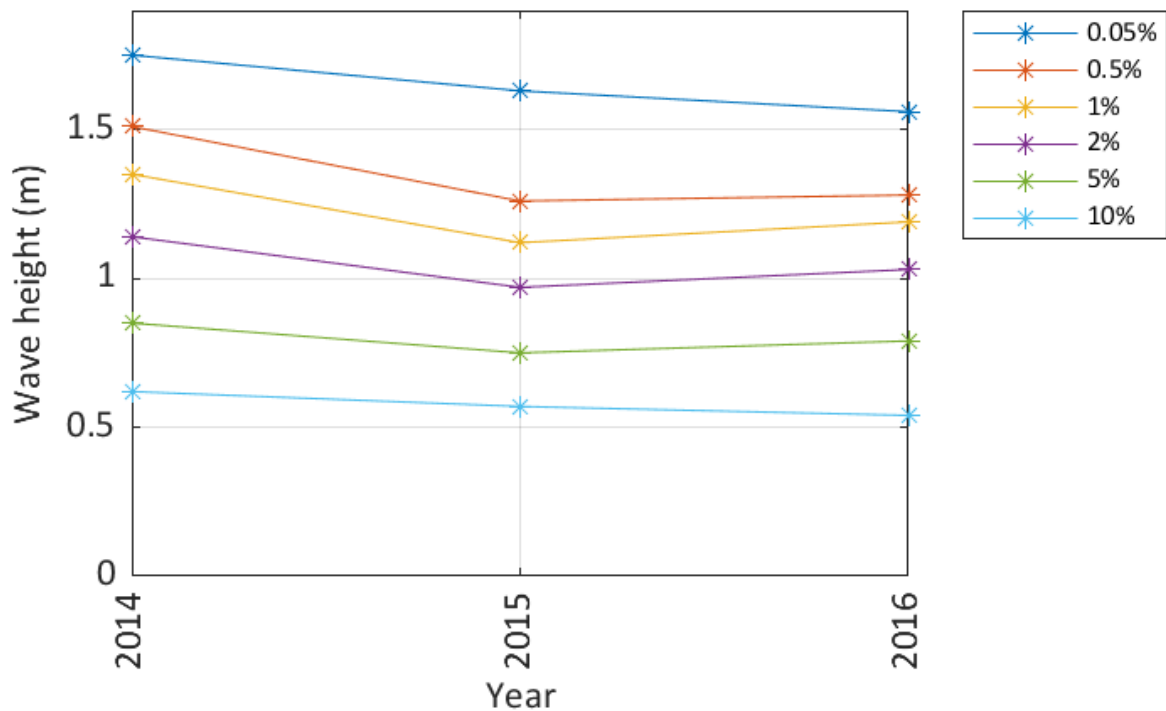
Storms at New Brighton during 2014



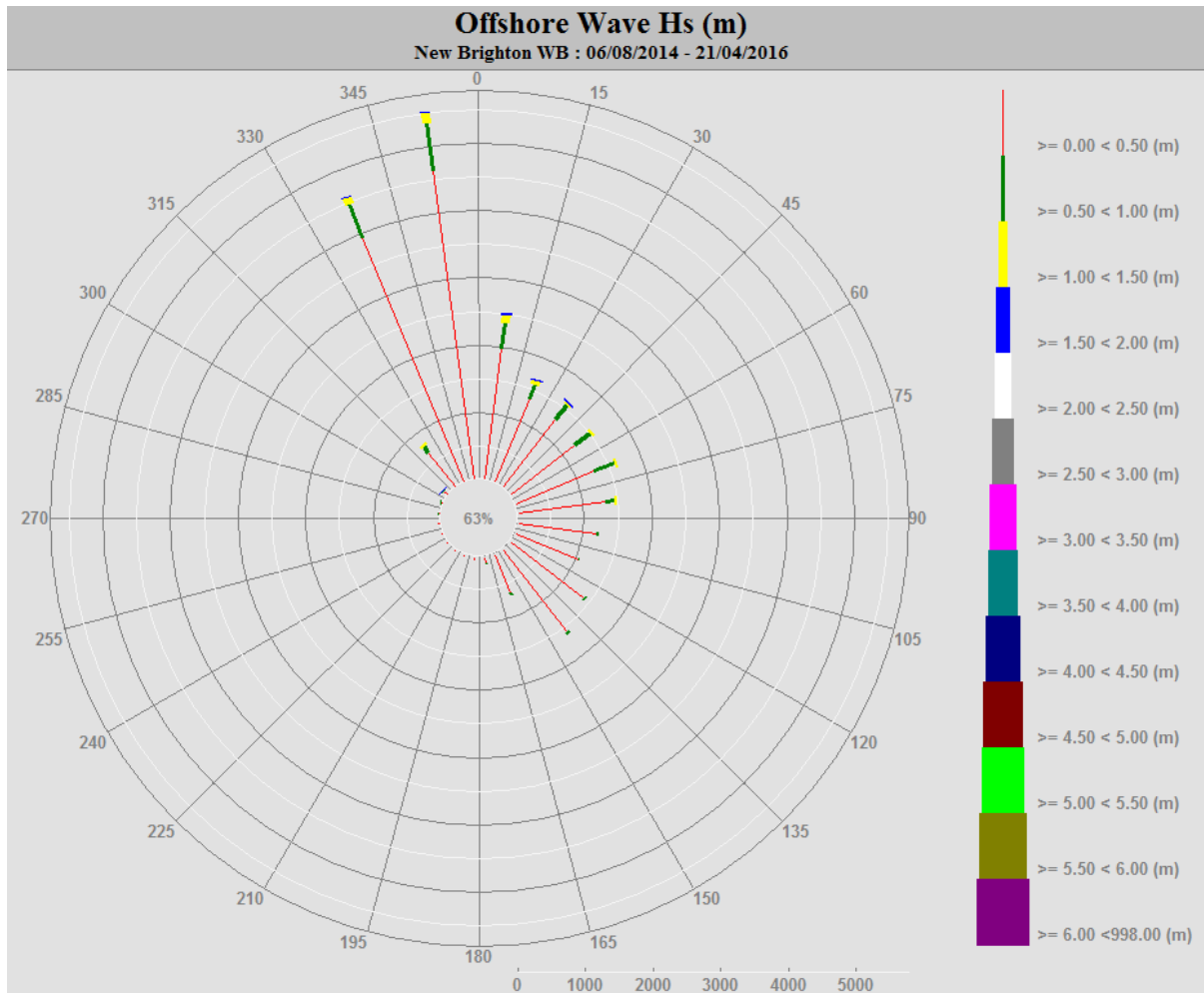
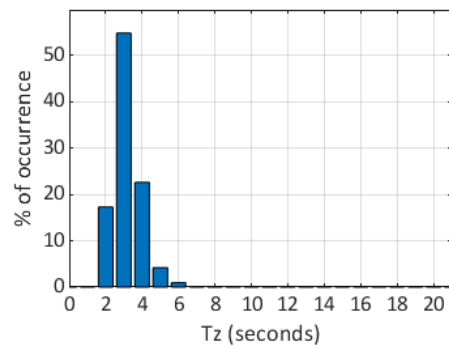
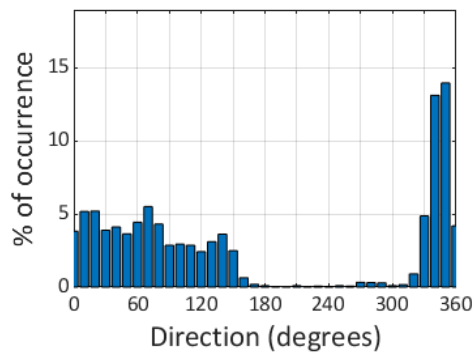
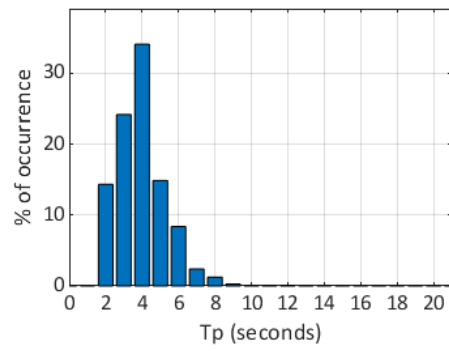
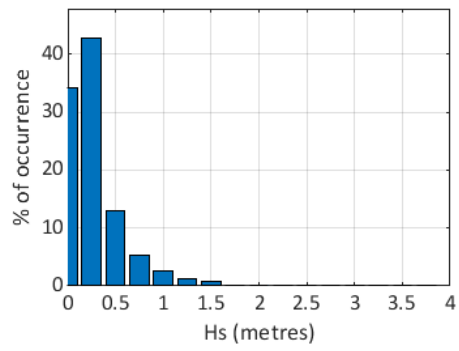
Storms at New Brighton - all years



New Brighton - Wave height exceedance (Hs)



New Brighton 2014



New Brighton 2014 to 2019 - Joint distribution (% of occurrence)

