

Deal Pier Wave Radar

Location

OS: 638145E 152700N

WGS84: Latitude: 51° 13.428' N Longitude: 01° 24.556' E

Water Depth

N/A

Instrument Type

Rosemount WaveRadar REX

Data Quality

Recovery rate (%)	Sample interval
93	20 minutes

Statistics - 2012

All times are GMT

Month	H _s (m)	T _p (s)	T _z (s)	Dir. (°)	SST (°C)	No. of days
January	0.33	5.3	4.3	-	-	29
February	0.32	5.1	3.5	-	-	26
March	0.20	4.9	3.2	-	-	31
April	0.35	5.4	3.6	-	-	26
May	0.28	5.0	3.4	-	-	30
June	0.31	5.1	3.5	-	-	30
July	0.20	5.0	3.3	-	-	27
August	0.22	4.8	3.2	-	-	29
September	0.26	5.1	3.5	-	-	29
October	0.37	5.4	3.7	-	-	29
November	0.35	5.4	3.8	-	-	30
December	0.42	5.8	4.2	-	-	26

Storm Analysis

Date/Time	H _s (m)	T _p (s)	T _z (s)	Dir. (°)	Water level elevation* (OD)	Tidal stage (hours re. HW)	Tidal range (m)	Tidal surge* (m)	Max. surge* (m)
27-Oct-2012 09:30	1.74	7.1	6.1	-	2.74	HW	8.2	0.40	0.55

* Tidal information is obtained from the nearest recording tide gauge (the radar also provides tidal data). The surge shown is the residual at the time of the highest H_s. The maximum tidal surge is the largest surge during the storm event.

Annual Statistics

Year	Annual H_s exceedance* (m)						Annual Maximum H_s	
	0.05%	0.5%	1%	2%	5%	10%	Date	A_{max} (m)
2005	-	1.37	1.23	1.12	0.92	0.78	16-Oct-2005 09:40	1.62
2006	1.62	1.37	1.25	1.11	0.91	0.75	26-Jan-2006 08:00	1.68
2007	1.60	1.33	1.22	1.08	0.89	0.75	28-Sep-2007 11:00	1.77
2008	1.79	1.35	1.25	1.11	0.92	0.77	22-Mar-2008 11:00	1.97
2009	1.71	1.43	1.30	1.16	0.97	0.79	12-May-2009 00:00	1.97
2010	2.00	1.58	1.40	1.24	1.02	0.83	23-Dec-2010 23:20	2.20
2011	1.62	1.21	1.13	1.01	0.83	0.68	02-May-2011 21:40	1.82
2012	1.56	1.13	0.98	0.86	0.69	0.55	27-Oct-2012 09:30	1.74

* i.e. 5 % of the H_s values measured in 2005 exceeded 0.92 m

Distribution plots

The distribution of wave parameters are shown in the accompanying graphs of:

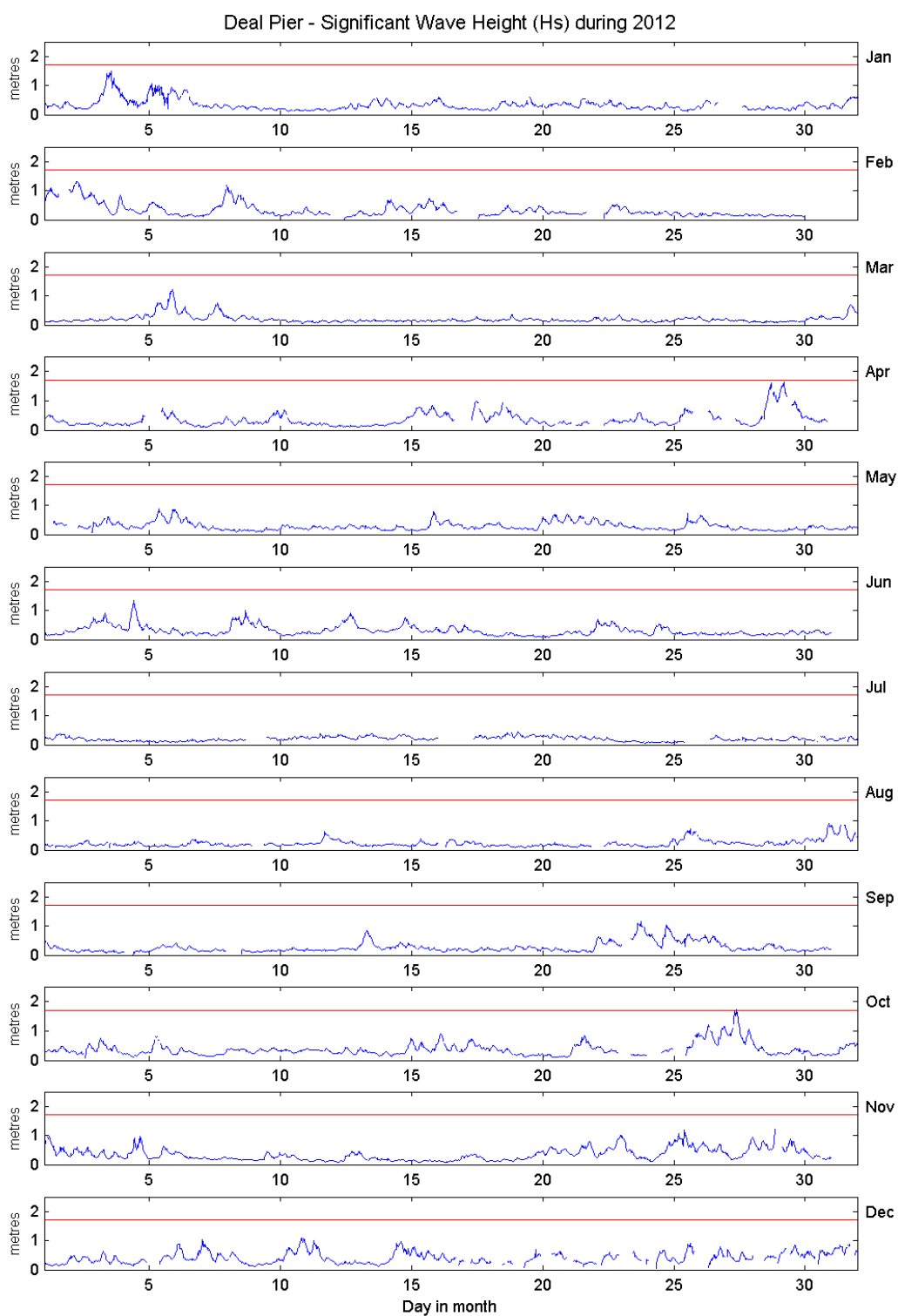
- Annual time series of H_s (red line is 1.7 m storm threshold)
- Percentage of occurrence of H_s and T_z for 2012
- Incidence of storm waves for 2012. Storm events are defined using the Peaks-over-Threshold method. The highest H_s of each storm event is shown
- Joint distribution of all parameters for all measured data, given as percentage of occurrence

General

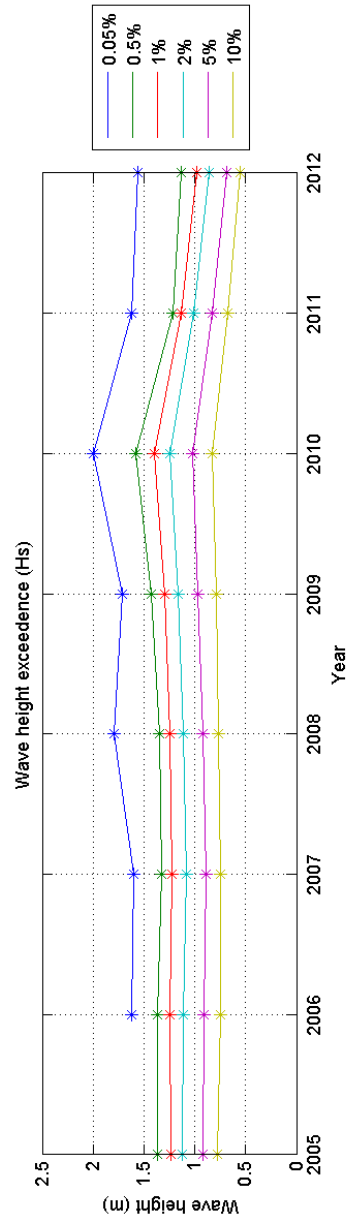
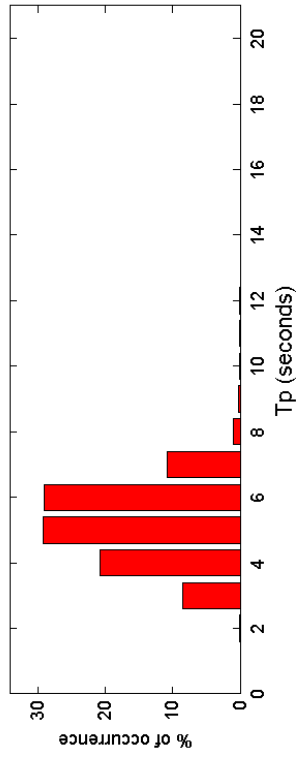
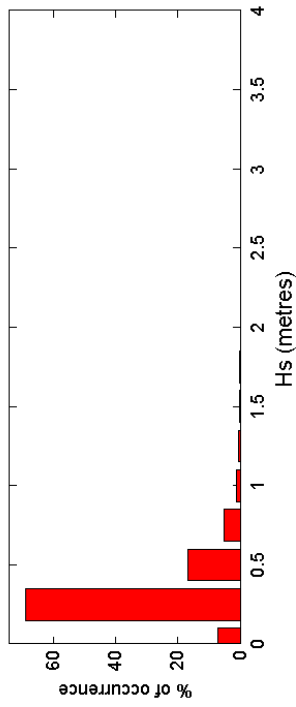
The WaveRadar REX was installed on 26 August 2005.

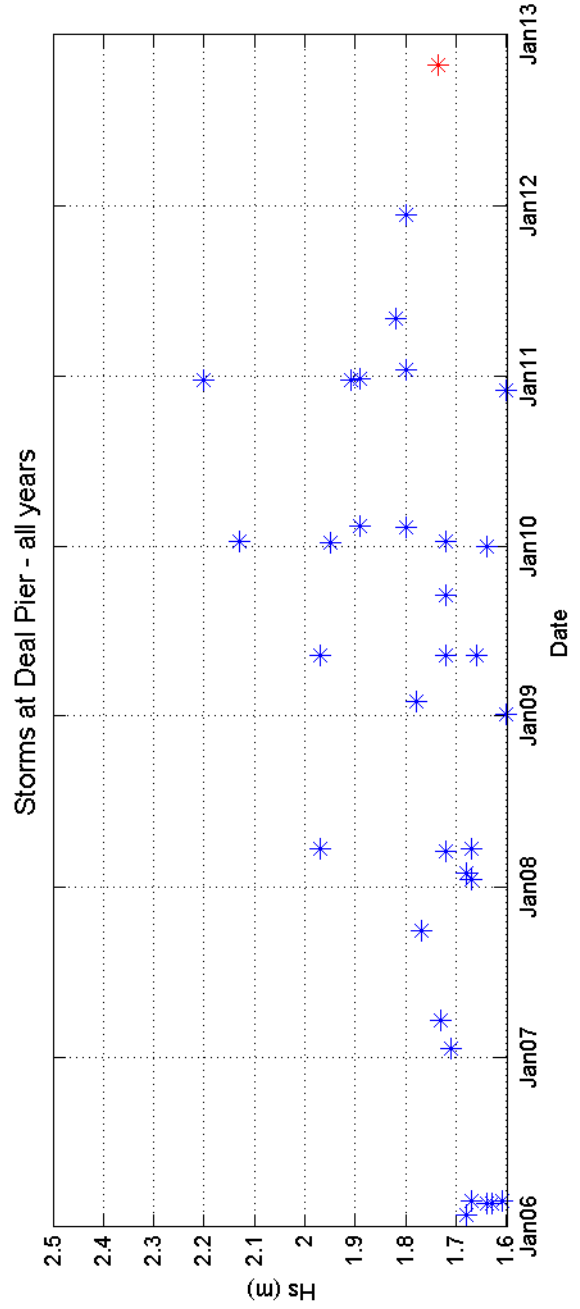
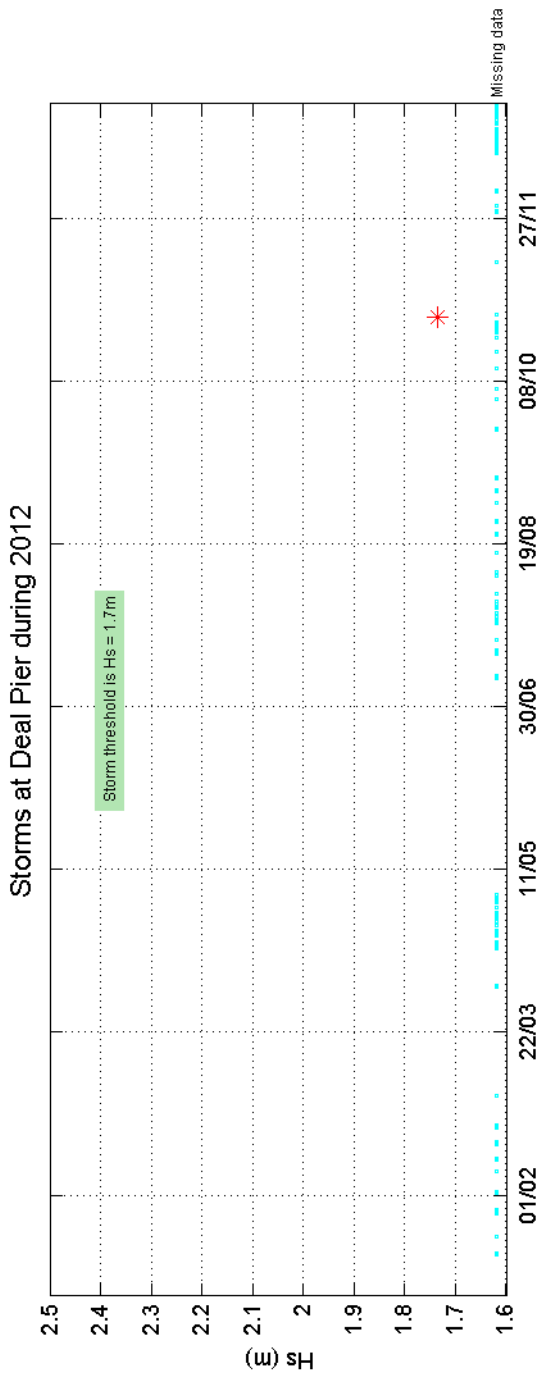
Acknowledgements

TASK2000 tidal prediction software was kindly provided by the Permanent Service for Mean Sea Level, Proudman Oceanographic Laboratory.



Deal Pier 2012





Deal Pier 2006 to 2012 - Joint distribution (% of occurrence)

