

Channel Coast News

Issue 26 - February 2006

The newsletter for the Southeast Strategic Regional Coastal Monitoring Programme www.channelcoast.org

Regional News

South East Coastal Group

BMP reports for Eastbourne, Bexhill, Hastings, Kingsdown and Sandwich Bay have been completed and issued for comment; once finalised they will be put on the project web site. BMP reports for Tankerton and Swalecliffe and Northern Sea Wall are currently in preparation and will be completed this month.

Preparations for the 2006 topographic and bathymetric campaigns are well under way with the first topographic surveys due for completion during March and April.

SCOPAC

Some of the surveys originally planned for Poole Bay in January and February have been re-scheduled while the extensive beach replenishment scheme is underway. The Swanage frontage was completed first, followed by the Poole beaches. Replenishment then moved to the Bournemouth frontage, starting at the Hengistbury Head end. Up-to-date reports and photographs can be found at: <http://www.poolebay.net/>

South Downs Coastal Group

The 2005 Beach Management Plan Report for Pagham Harbour has been drafted and is currently with Project Partners for review/comment. Data from the autumn aerial survey flown by BKS should be received in the next few weeks once Arun DC have completed their QA assessment. All re-processed 2003/2004 hydrographic survey data, with the exception of MU8A, have now been checked and accepted into the project archive.

The second phase of bathymetric survey work along the SDCG frontage is programmed to start in the next few weeks. Preparations for Phase 2 have started, including a review of survey techniques, project programme and future resource requirements.

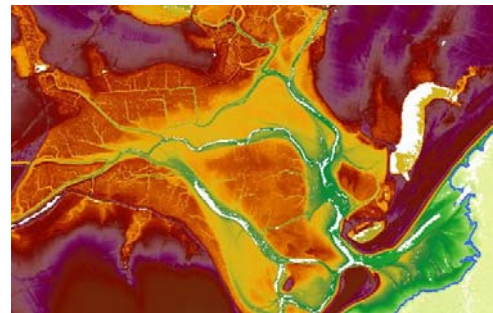
Environment Agency (Southern Region)

All outstanding data collected under the 2005/06 aerial programme has now been received from BKS and QA of this data is nearing completion. Several of the datasets have already been accepted and are being passed to the CCO for upload onto the project's website.

The first batch of data collected under the 2005/06 LiDAR programme, which covers the polygons on the Isle of Wight, has now been delivered and is undergoing preliminary QA. It is hoped that all of this year's LiDAR flights will be completed by the end of March.

Channel Coastal Observatory

The website's Data Catalogue section now includes online visualisation of the LiDAR data, as can be seen in this example from Pagham Harbour for 2004.



What's New?

Approval has been received for Phase II of the southeast's Regional Monitoring Programme, extending, therefore, to March 2012.

Contacts

If you have any queries about the Strategic Regional Coastal Monitoring Programme, or would like a personal copy of this newsletter by email, please contact your area representative:

South East Coastal Group: Chris Longmire
Strategic.Monitoring@Canterbury.gov.uk

South Downs Coastal Group: Dan Amos
Strategic.Monitoring@Worthing.gov.uk

SCOPAC: Travis Mason
Travis.Mason@noc.soton.ac.uk

Environment Agency: Helen Dalton
Strategic.Monitoring@environment-agency.gov.uk

Regional Co-ordinator: Andy Bradbury
Andy.Bradbury@noc.soton.ac.uk

or contact the regional data management centre:
Channel Coastal Observatory
National Oceanography Centre
European Way, Southampton, SO14 3ZH
Tel: 02380 598467
cco@channelcoast.org

