

Channel Coast News

Issue 16 - October 2004

The newsletter for the Southeast Strategic Regional Coastal Monitoring Programme www.channelcoast.org

Annual Partners Meeting

The Annual Meeting was held on 30 September at the Worthing Leisure Centre, kindly arranged by Worthing Borough Council. 65 Partners attended, including some delegates from the southwest who were interested to see the progress of the southeast's programme. The Chairman, David Green, opened the meeting with a brief introduction and a request to Partners to participate fully in the day's proceedings.

Andy Bradbury began his report with progress on the issues raised by Partners at the 2003 meeting:

- A project-wide, non-technical leaflet has been produced which can be used for informing Councillors and other interested parties about the Regional Monitoring Programme, as well as being suitable for surveyors/beach engineers to give to members of the public on request. Draft copies of the leaflet were distributed at the meeting, with a request for any comments or suggestions to area representatives by the end of October.
- A schedule of data delivery has been drawn up and approved by the Coastal Group Chairmen. This will be kept up-to-date by Lead Authorities and available to Partners on the website.

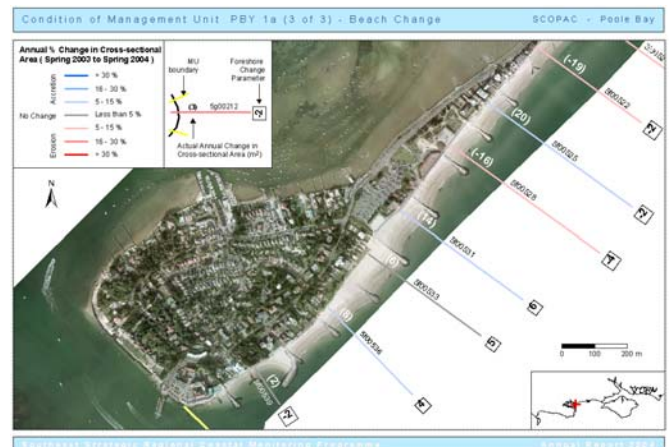
The Annual Report was introduced in some detail. Andy Bradbury outlined the structure of the report and explained that, although there were some local differences in content for some of the reports, the basis of the analysis was consistent across the whole region. He also emphasised that, except where monitoring has taken place over a lengthy period, any changes

identified by this analysis should be regarded as indicative of short-term trends only and that no long-term strategy should be based on them.

Two hard copies of the report for their area will be distributed to Local Authorities, together with a CD containing the whole report. The reports will also be available as pdf files to download directly from the website.

In most cases, one report covers a coastal sub-cell *e.g.* North Foreland to Dover Harbour, and starts with a brief introduction, followed by summaries of the time series data (waves, tides and meteorological data); then a synopsis of the overall condition of the sub-cell and listing the Annexes with the detailed survey reports. Following this short text section are the map sheets with summary information, including:

- erosion/accretion of the whole sub-cell
- position of MHW superimposed on the most recent orthophoto (BMP sites only)
- erosion/accretion of each designated profile in each Management Unit (*see example from Sandbanks, below*)



Graphs of the time series of cross-sectional area for each profile and successive profiles over time at each profile (superimposed upon the master profile) have been prepared and are included on the CD issued with each report.

Francesca Pert described the methods behind the topographic analysis, including derivation of Maser Profile, calculation of cross-sectional areas and an explanation of the Foreshore Change Parameter; first used in the FutureCoast report, this parameter describes the condition of a beach in terms of its advance or retreat at both the Mean High Water and Mean Low Water positions, and the change in beach gradient *i.e.* if the beach is steepening or flattening. The Foreshore Change Parameter varies from +6 (accretion at MHW and MLW and beach flattening – regarded as the healthiest condition for a beach) to –6 (retreat at MHW

and MLW with beach steepening), and where 0 represents no change.

Analysis in these reports concentrates on change over the past year and, wherever possible, changes were derived using Spring 2003 and Spring 2004 surveys.

Travis Mason introduced the hydrodynamic data reports and described the statistical analysis of the data. The tide gauge reports contain:

- monthly maxima and minima of extreme water levels, surge and mean sea level
- 10 highest values of extremes and surge in the year
- the highest value in the year, together with the annual maxima (A_{max}) for all previous years
- the annual mean sea level (and for previous years)

The wave reports are of a similar format and include monthly averages, 5 highest storm events and the annual exceedance values *e.g.* at Pevensey Bay, 2% of the measured waves exceeded 2.08m.

The morning session concluded with questions and discussions, which raised some potential additions and modifications for future reports *e.g.* including the tidal stage with the surge extremes.

The afternoon session consisted on a series of presentations about existing aspects of the programme and work linking with other organisations. Roger Spencer and David Southcott began with a case study of how the monitoring programme for the Elmer scheme was used and later evolved to cover wider areas. They also demonstrated the longshore variability in erosion/accretion with a clear diagram of how to represent area-wide changes over time.

Helen Dalton described how the new ABMS programme differs from previous years, notably in the required level to be achieved and how the beach monitoring programme for the South Downs Coastal Group is absorbed into the aerial programme. Peter Skrubbeltrang from Kampsax also explained the technical details of the flying programme, the photographic and position-fixing equipment and the contact prints which are produced.

Samantha Cope presented the results of a scoping study undertaken on behalf of English Nature and the Environment Agency, which investigated incorporating ecological monitoring into the Regional Monitoring Programme, to aid nature conservation and coastal management.

Stephen McFarland concluded the afternoon presentations with an analysis of different modes of failure of sea defence structures and how analysis of monitoring data can be used to assess the vulnerability of different types of structures to combinations of failure types.

An important item arising from the discussion periods was that DEFRA require more feedback from Local Authorities and other interested parties regarding whether the Regional Monitoring Programme is fulfilling their needs effectively and whether the structure is suitable – a lack of negative comments is not sufficient justification for programme renewal.

A request was made for attendance certificates for Partners as evidence of Continuing Professional Development.

What's New?

An annual competition for the cover photograph for the Annual Report (this year's cover photo was of waves on Bournemouth beach, taken by Francesca Pert). High resolution, digital photos please, full attribution given. We will ask for entries by July 2005, so plenty of time to get the perfect shot!

Contacts

If you have any queries about the Strategic Regional Coastal Monitoring Programme, or would like a personal copy of this newsletter by email, please contact your area representative:

South East Coastal Group: Chris Longmire
Strategic.Monitoring@Canterbury.gov.uk

South Downs Coastal Group: Dan Amos
Strategic.Monitoring@Worthing.gov.uk

SCOPAC: Travis Mason
tem@soc.soton.ac.uk

Environment Agency: Helen Dalton
Strategic.Monitoring@environment-agency.gov.uk

Regional Co-ordinator: Andy Bradbury
Andy.Bradbury@soc.soton.ac.uk

or contact the regional data management centre:
Channel Coastal Observatory
Southampton Oceanography Centre
European Way, Southampton
SO14 3ZH
Tel: 02380 598467
cco@channelcoast.org