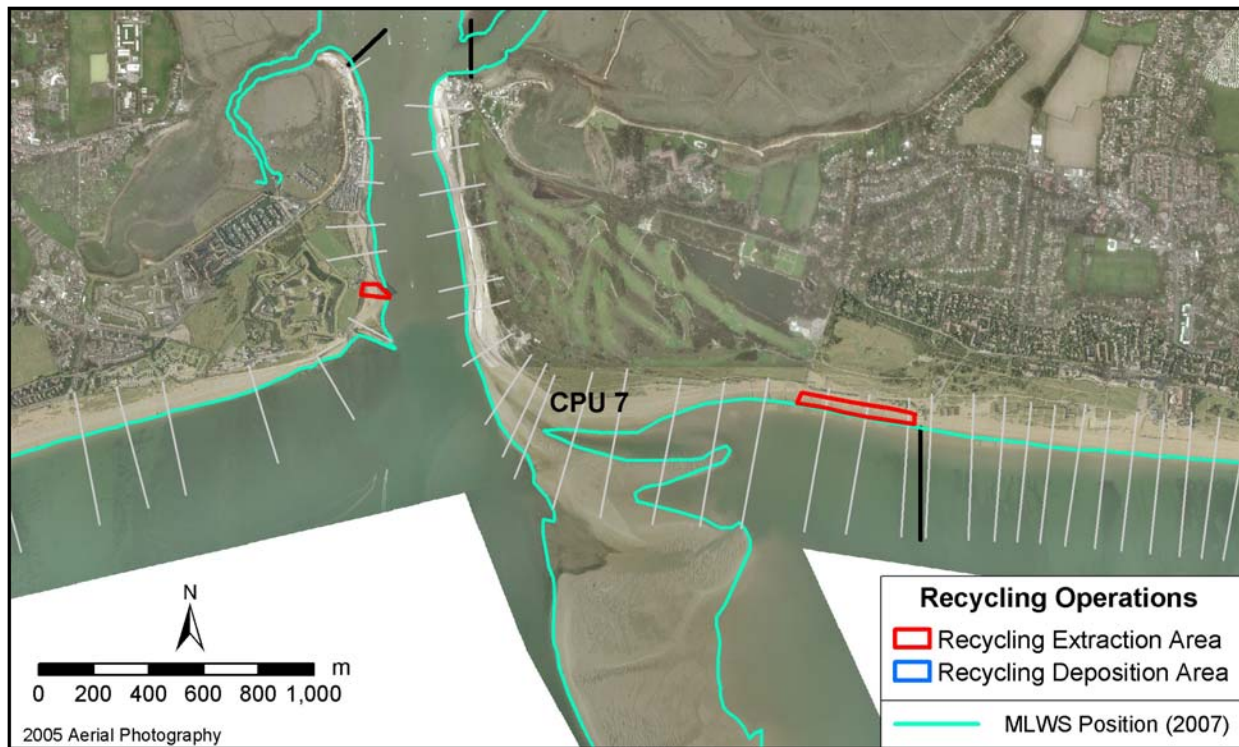


## Policy Unit: 5a CPU7

### Inn on the Beach to Langstone Harbour Entrance

Topographic Beach Profiles 5a00358 – 5a00411



#### Summary

The beach in this unit is relatively narrow along the harbour entrance channel and widens significantly past the recurve and out across East Winner. The Inn on the Beach is protected by a substantial sea wall, whilst the shoreline immediately to the west is protected by a sloping timber revetment. Erosion along the eastern side of Langstone Channel in the past has led to construction of a concrete wall, groyne and gabions to protect the Sailing Club.

The long-term westwards sediment drift, particularly when waves from the south-east are present, has meant that the short section of beach to the west of the Inn on the Beach historically has been used for material extraction and subsequently recycled to the frontages along east Hayling.

#### Survey Regime

Survey type	Frequency	Profile spacing/survey extent
<i>Topographic baseline</i>	Annual	50m to MLWS
<i>Topographic interim profile</i>	Spring & Autumn	100 - 200m to MLWS
<i>Bathymetry</i>	5 years	50m profiles, MLWN to 1km offshore
<i>Ortho-photography</i>	5 years	MLWN
<i>Non-rectified aerial photography</i>	Annual	MLWN
<i>Lidar</i>	5 years	MLWN
<i>Habitat mapping</i>	5 Years	Extent of aerial photography

## Summary of beach operations

Date	Operation	Quantity (m <sup>3</sup> )	Location/Notes
1997-2009	Gravel Extraction for recycling along the East Hayling frontage	Approx 60,000	Extraction between profile 5a00366 and 5a00358 (Inn on the Beach)

*Full details of beach operations can be obtained from Havant Borough Council or the Channel Coastal Observatory ([www.channelcoast.org](http://www.channelcoast.org))*