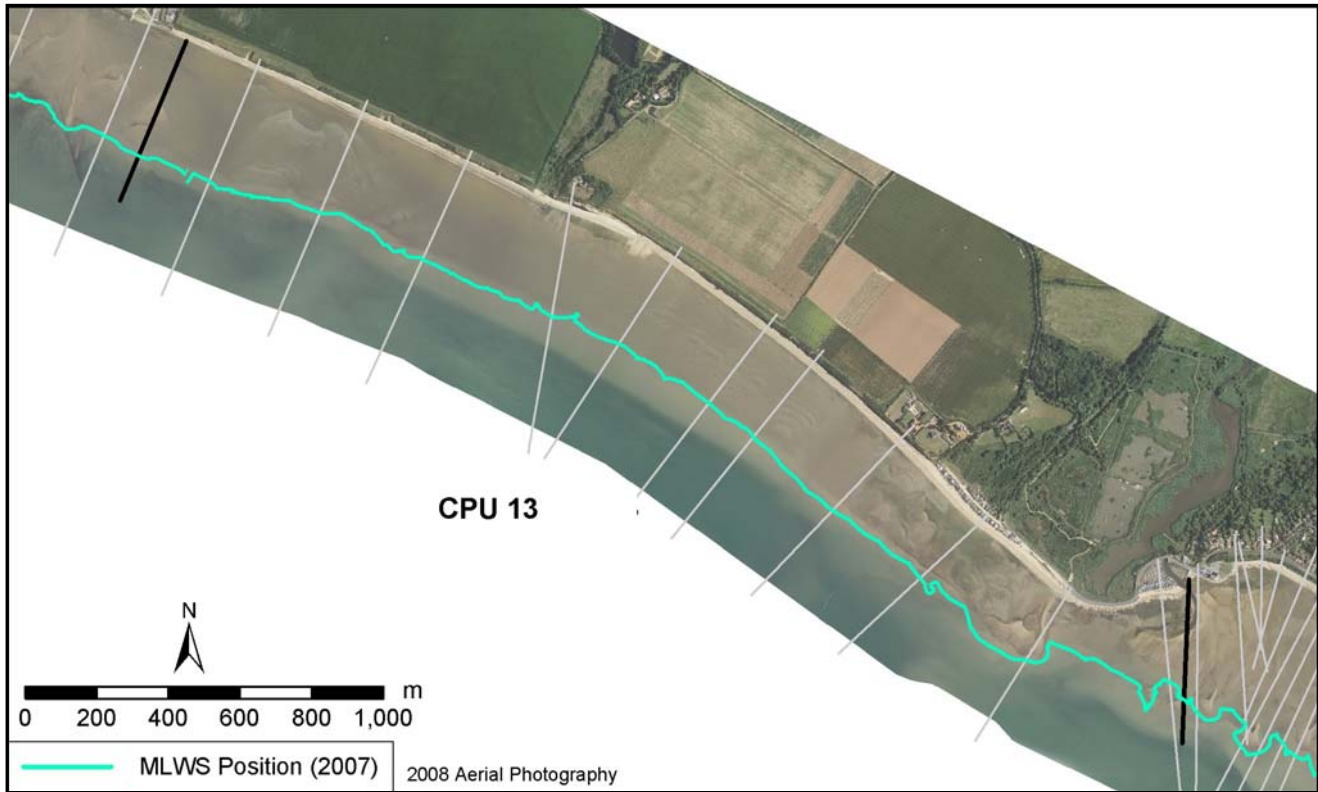


## Policy Unit: 5b CPU13

### Hill Head Harbour to Solent Breezes

Topographic Beach Profiles 5b00253 – 5b00323



#### Summary

The majority of this unit consists of a mixed (sand and gravel) upper beach and wide intertidal foreshore, extending 350m at the western end reducing to 220m in front of Titchfield Haven. Most of the beach is backed by low cliffs of Pleistocene Gravel overlying Bracklesham Sand. There is a concrete sea wall which protects the road in front of Titchfield Haven and a series of groynes along the beach in front Titchfield Haven and Hill Head Harbour. There is a drift-divide near the unit boundary at Solent Breezes.

#### Survey Regime

Survey type	Frequency	Profile spacing/survey extent
<i>Topographic baseline</i>	5 years	50m to MLWS
<i>Topographic interim profile</i>	Spring and Autumn	300m to MLWS
<i>Bathymetry</i>	5 years	50m profiles, MLWN to 1km offshore
<i>Ortho-photography</i>	5 years	MLWN
<i>Non-rectified aerial photography</i>	Annual	MLWN
<i>Lidar</i>	5 Years	MLWN
<i>Habitat mapping</i>	5 Years	Extent of aerial photography